

POSER^{PRO}

Professional 3D Figure Design & Animation

Want to add 3D characters to your Max, Maya, Cinema4D or Lightwave scene? Includes pre-rigged figures, clothes, props and poses! **CGS exclusive. Save \$200!**

LEARN MORE

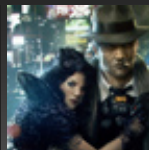


Steve Barrett



CGS ARTICLES

Latest CGS Articles



CGChallenge XXIV 'Secret Agent' Launched! - A creative challenge exploring the secret life of spies, informants, and agents. 11 June 2009 - 10 September 2009



Night at the Museum 2 - How Rhythm & Hues animated the octopus in Night at the Museum: Battle of the Smithsonian.



Stockholm Library Interior - Olivier Charles creates his vision of the Stockholm Public Library

Latest CGS News

THE 2ND ACM SIGGRAPH CONFERENCE AND EXHIBITION IN ASIA
SIGGRAPH ASIA 2009
the pulse of innovation
Pacifico Yokohama • Yokohama, Japan | conference 16-19 DECEMBER 2009



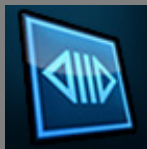
CGSociety CGNews
SIGGRAPH Asia Submission Deadlines are fast approaching.
Tuesday, 12 May 2009

Many of the deadlines for the submission of proposals at SIGGRAPH Asia's Yokohama conference are on us now. Technical papers are now due, and Course submissions are closing this week also.

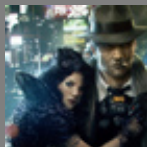
Advertisement



Gears of War Gnomon DVD - The Gnomon Workshop presents James Hawkins' Gears of War creature design DVD on production techniques.

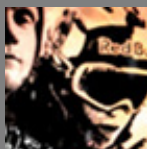


Pdplayer - Chaos Software and Asynthetic announce Pdplayer 1.0.2, a professional image sequence player and viewer for the 3D, CG and VFX industry.



CGChallenge XXIV 'Secret Agent' Launched! - A creative challenge exploring the secret life of spies, informants, and agents. 11 June 2009 - 10 September 2009

Latest CG Films



Monkeyhead on Skis - Monkeyhead delivers feature and TV Title sequences for Tanner Hall's 'The Massive' from Red Bull Moving Images and Trainjump Entertainment.

The SIGGRAPH Asia conference at the Pacifico Yokohama, will be staged 16- to 19 December 2009. Trade show floor 17-19 December.

SIGGRAPH is actively encouraging more submissions. Since the high ground success of the Singapore show last December, the momentum for Yokohama is building. They would truly love to have your work as a feature of the Japan show, as part of the newly international reach that ACM SIGGRAPH now has. Here are a list of the important submission dates from June onwards.

- 5 June [Art Gallery](#)
- 5 June [Emerging Technologies](#)
- 9 June [Educators Program](#)
- 26 June [Computer Animation Festival](#)
- 30 June [Internship Program](#)
- 17 August [Sketches & Posters](#)

Related links:

[SIGGRAPH Asia 2009](#)



DArT

Digital Painting, 3D Character Animation and more!
www.mydigitalcareer.com

Search CGNetworks Site

Subscribe to Newsletter



Burma Aid -
Updated
collaboration by
Shilo VFX house
on MTV project for
Burma brings
attention thru
inventive CG work.



**Krakatoa on
Rugby -**
Unexpected uses
Krakatoa on VFX-
Intensive Ad for
Snickers via BBDO
Moscow.

[Top of Page](#)



© 2002-2009 | The CGSociety - All rights reserved

No part of this website may be reproduced unless for personal use without prior written permission from The CGSociety. <http://www.cgsociety.org/>.